

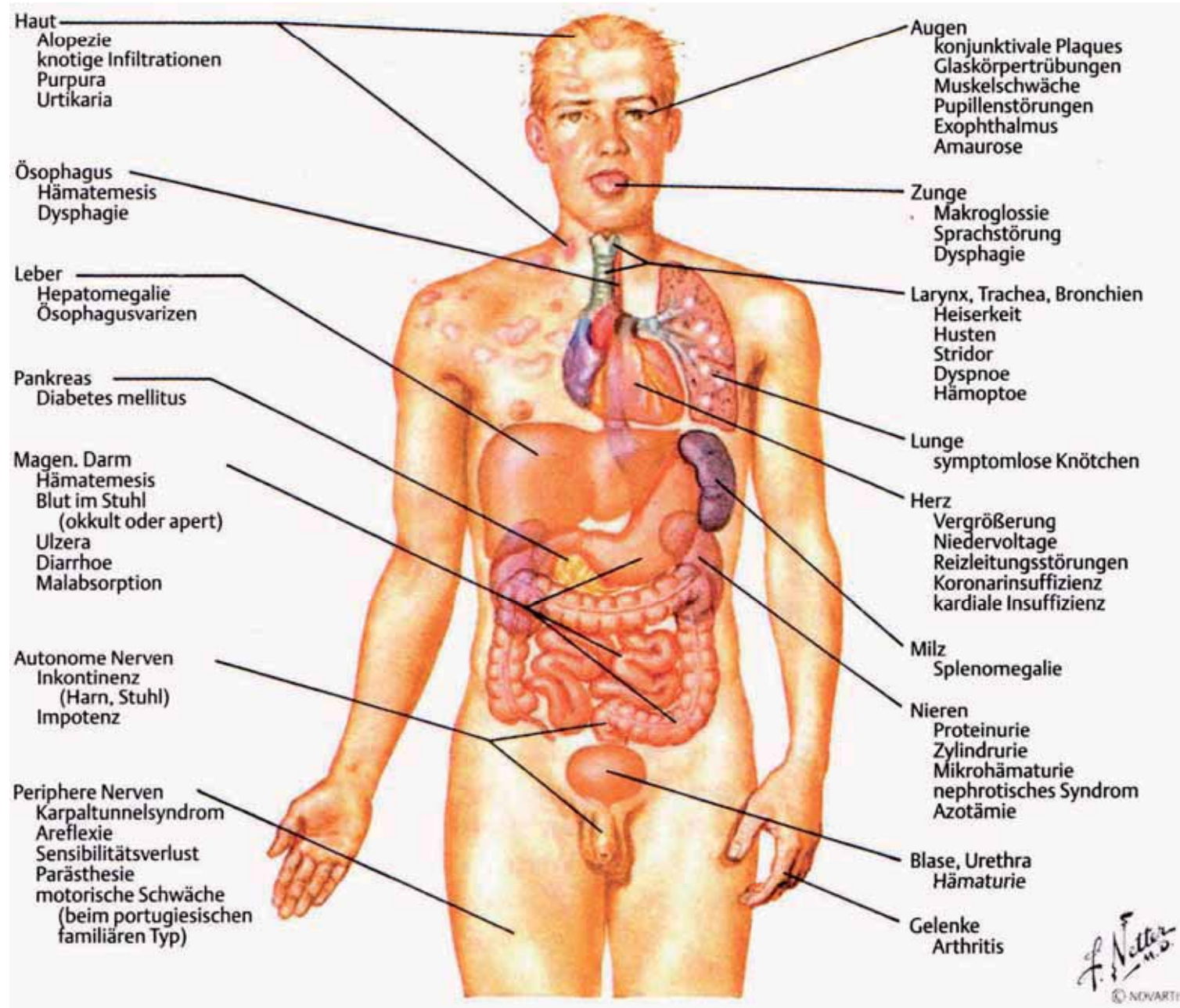


UniversitätsKlinikum Heidelberg

Die Sicht des Radiologen

W. Hosch

Diagnostische und Interventionelle Radiologie
Universitätsklinikum Heidelberg





X-ray



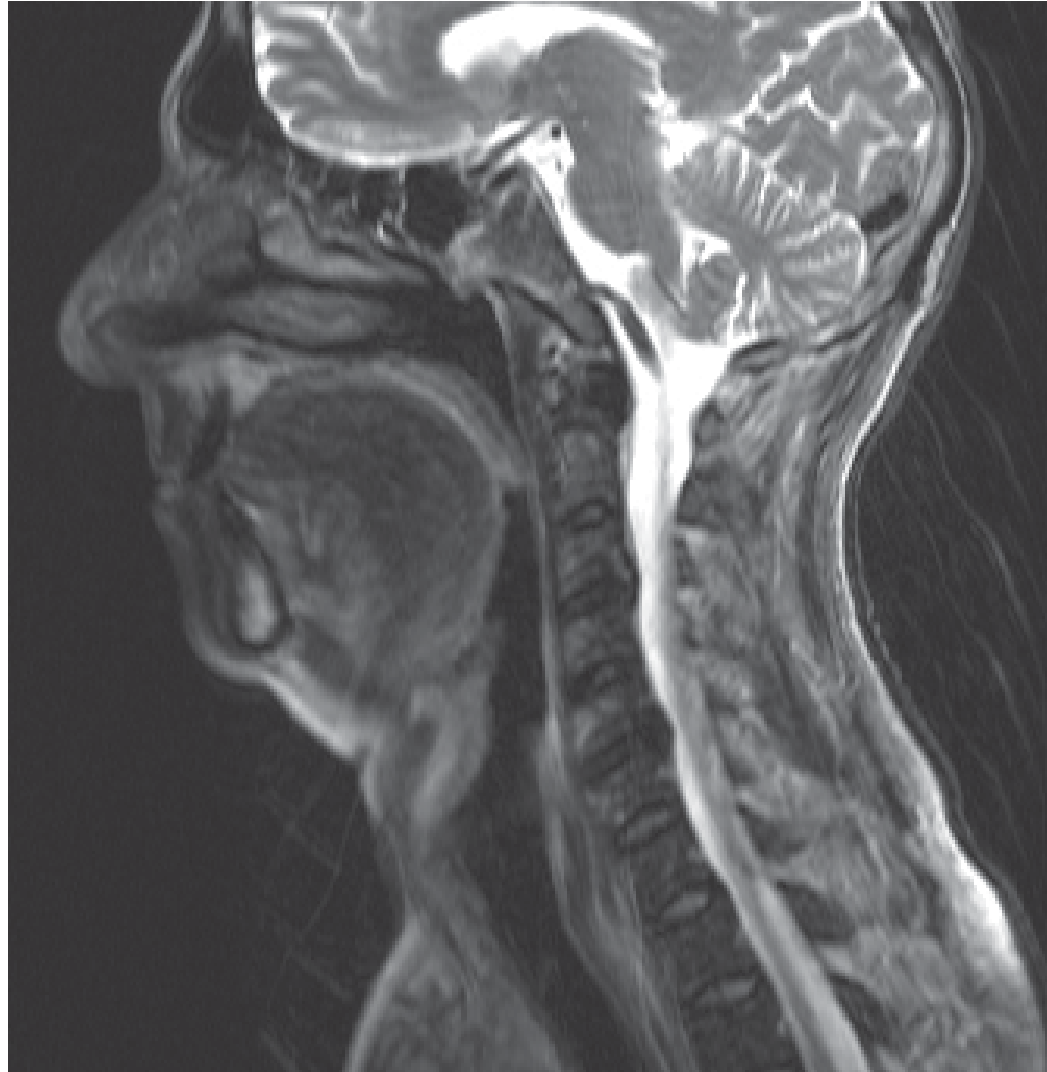
US

CT

MRI

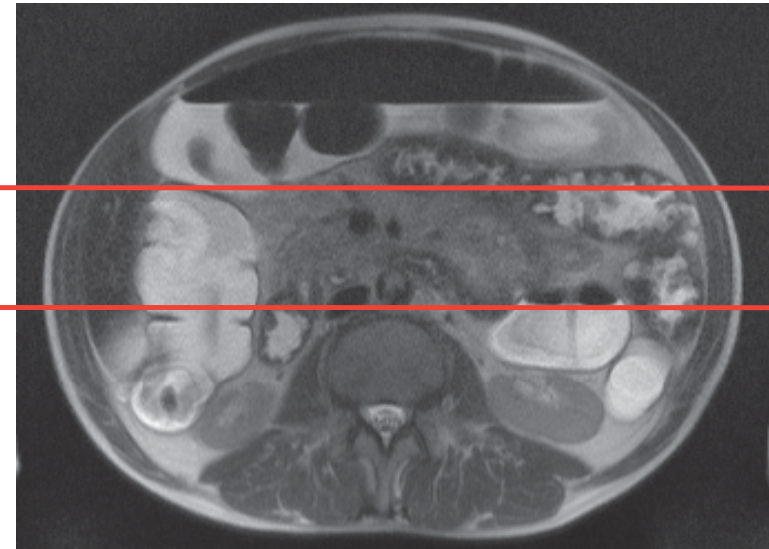


Gastrointestinal System



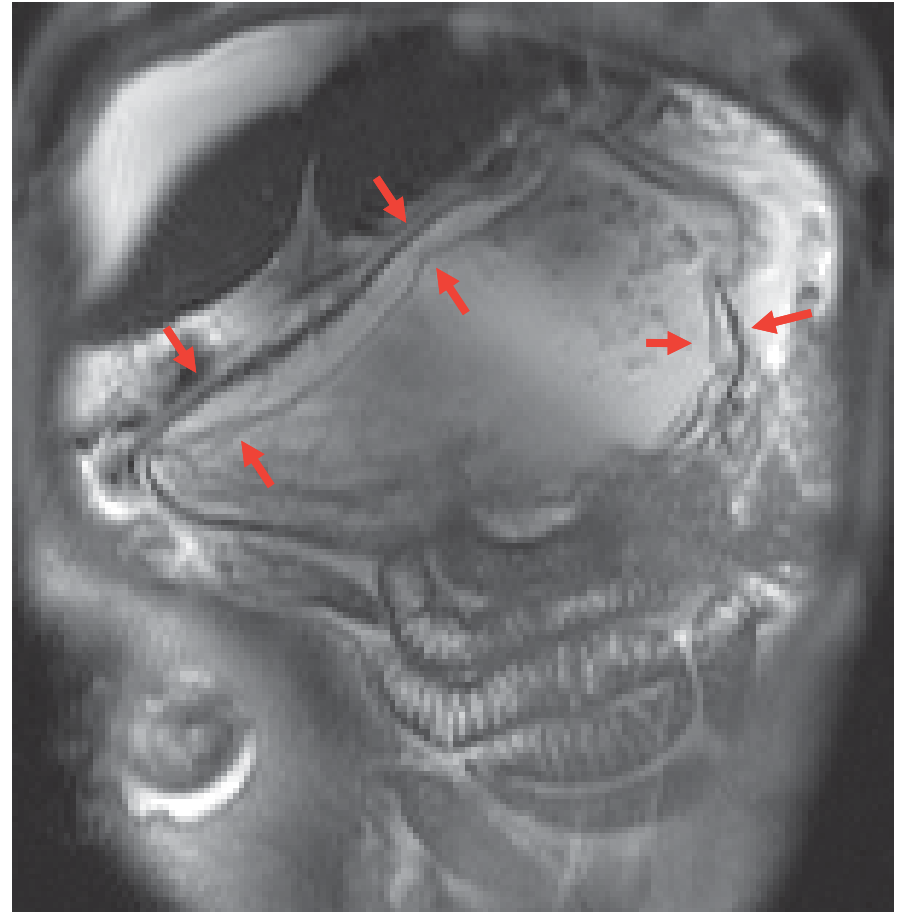
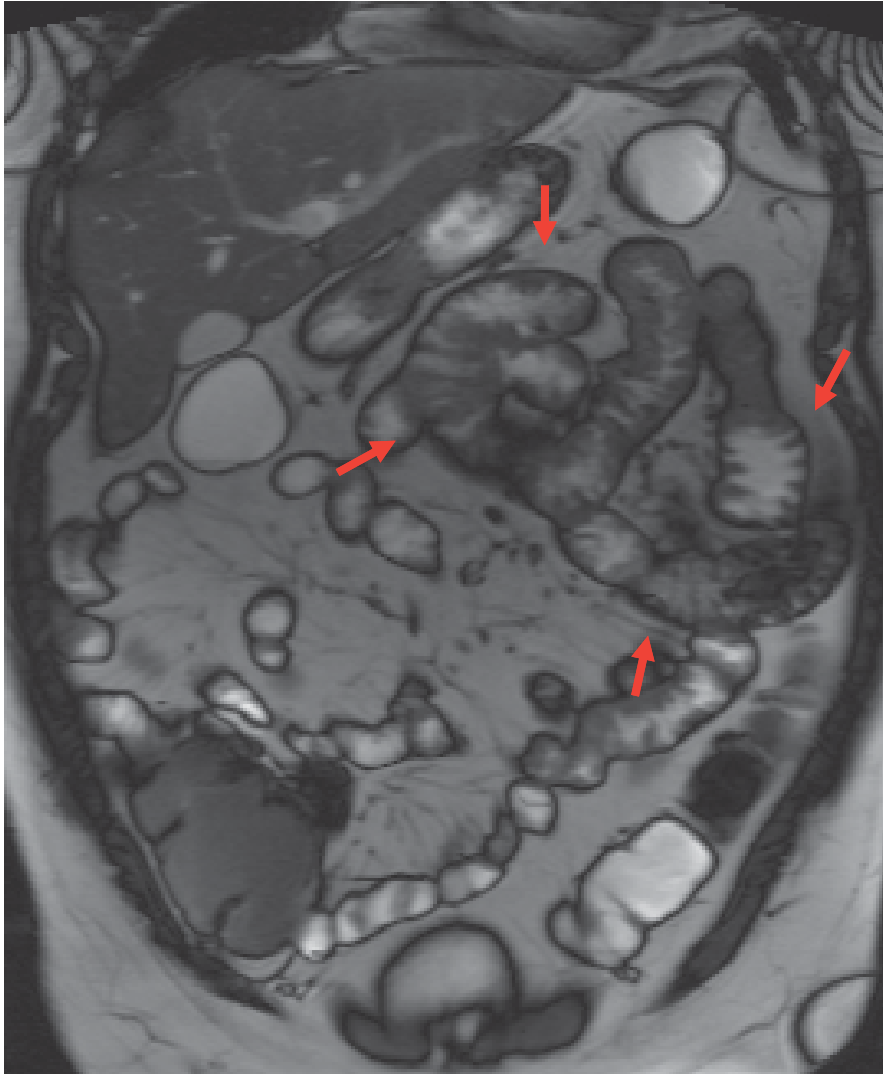


Gastrointestinal System



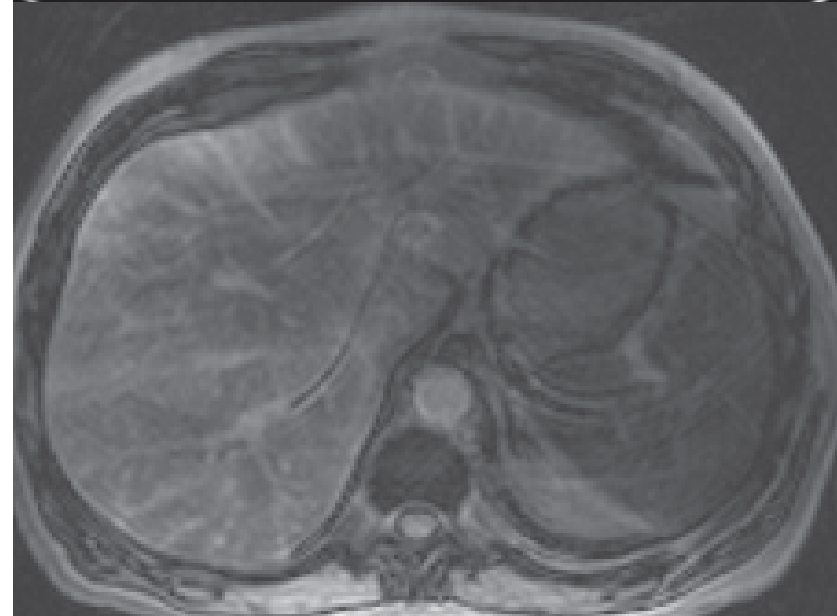
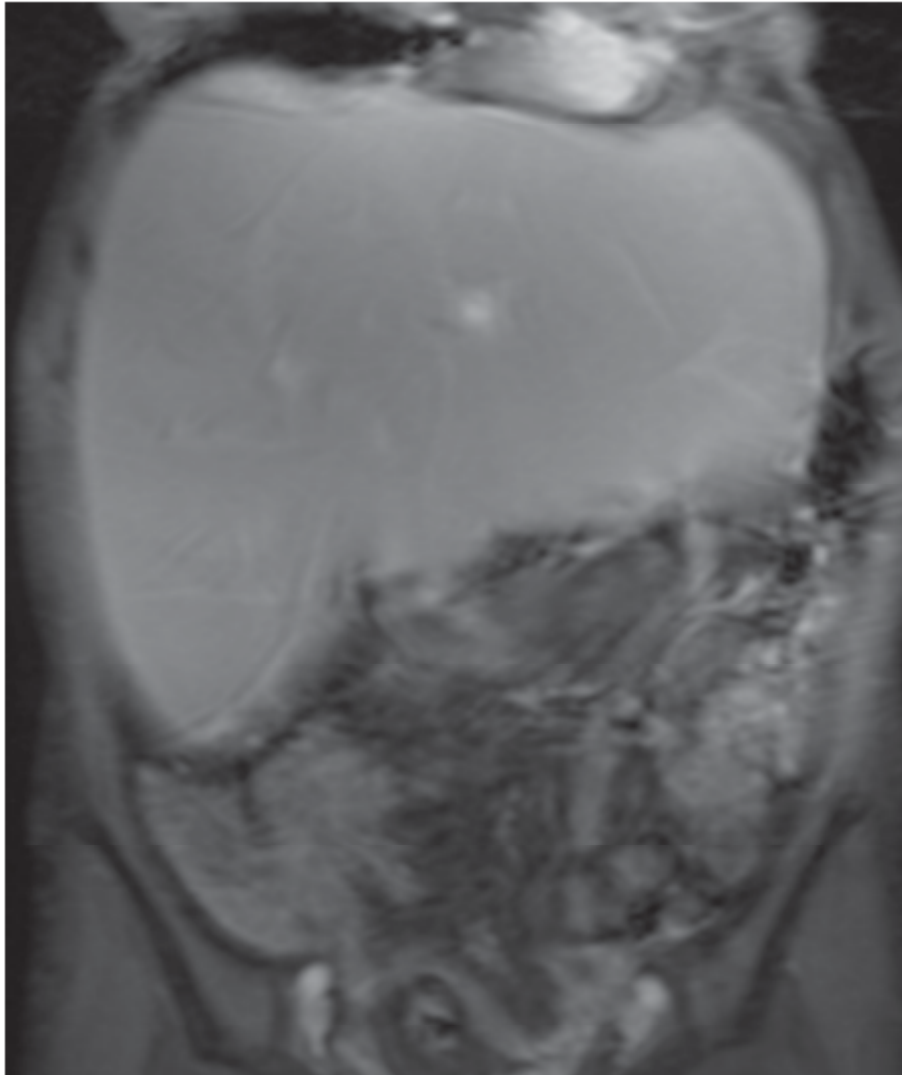


Gastrointestinal System





Gastrointestinal System



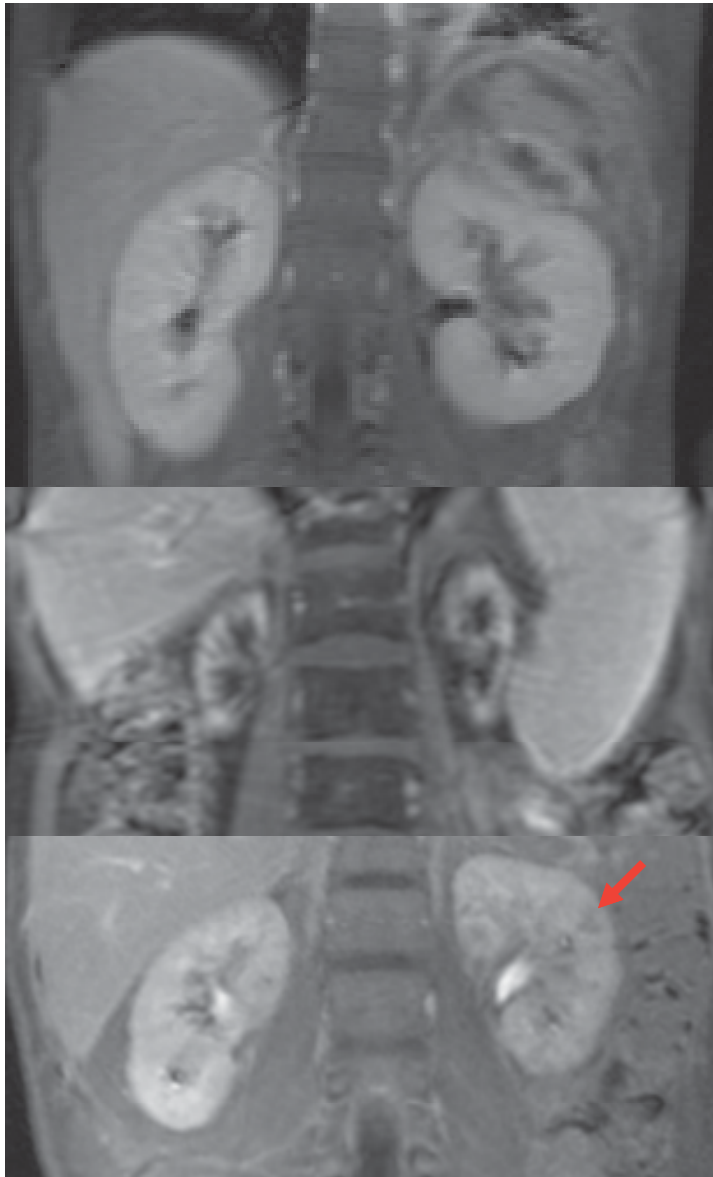


Gastrointestinal System



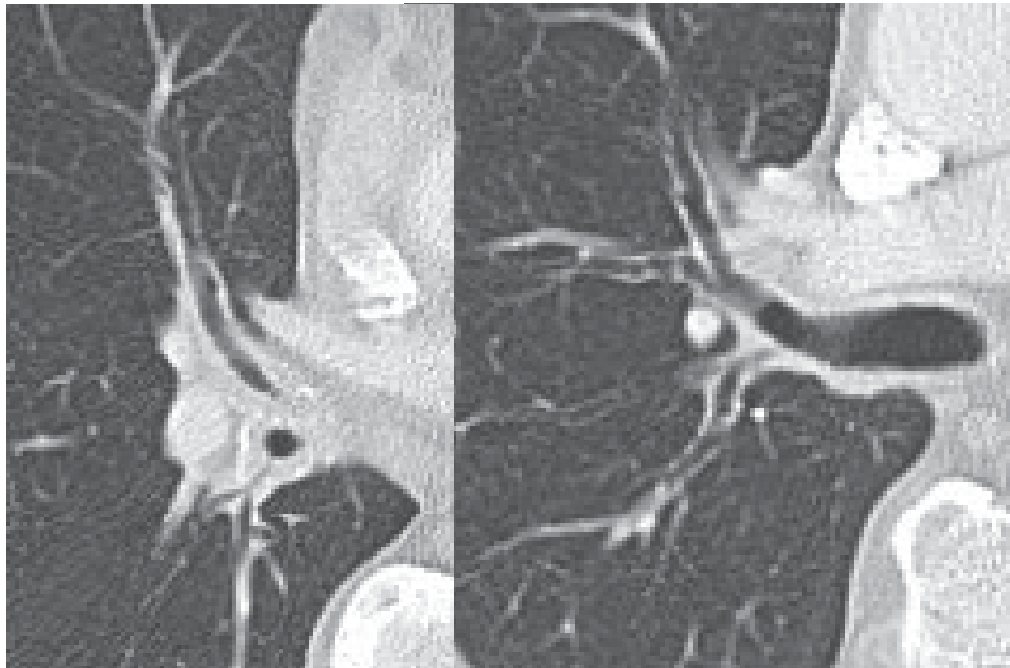
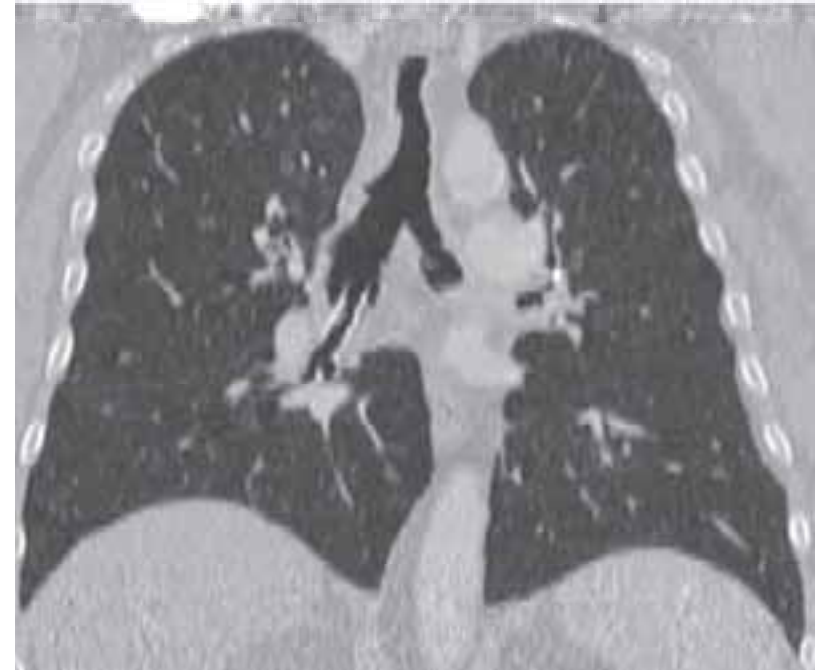
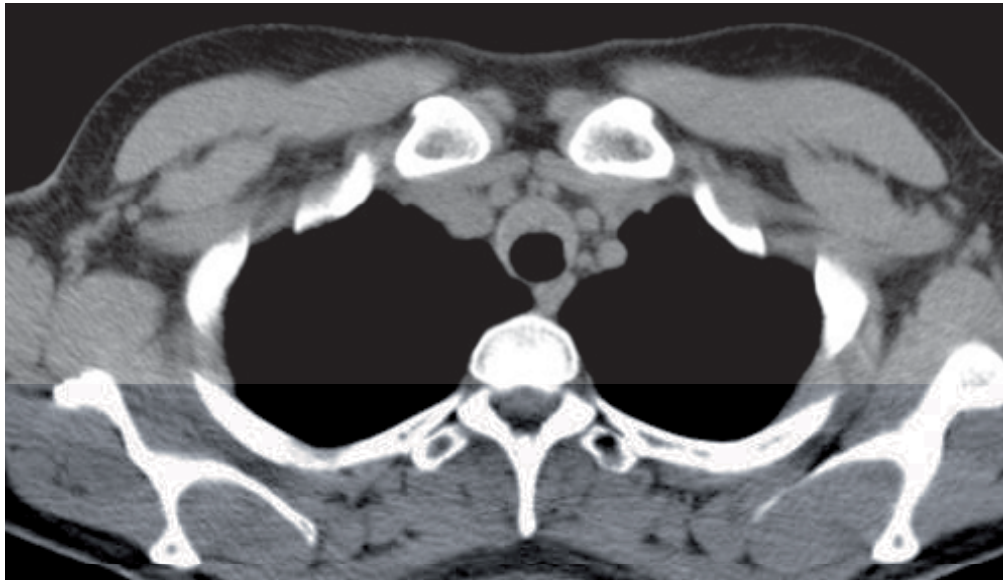


Genitourinary System



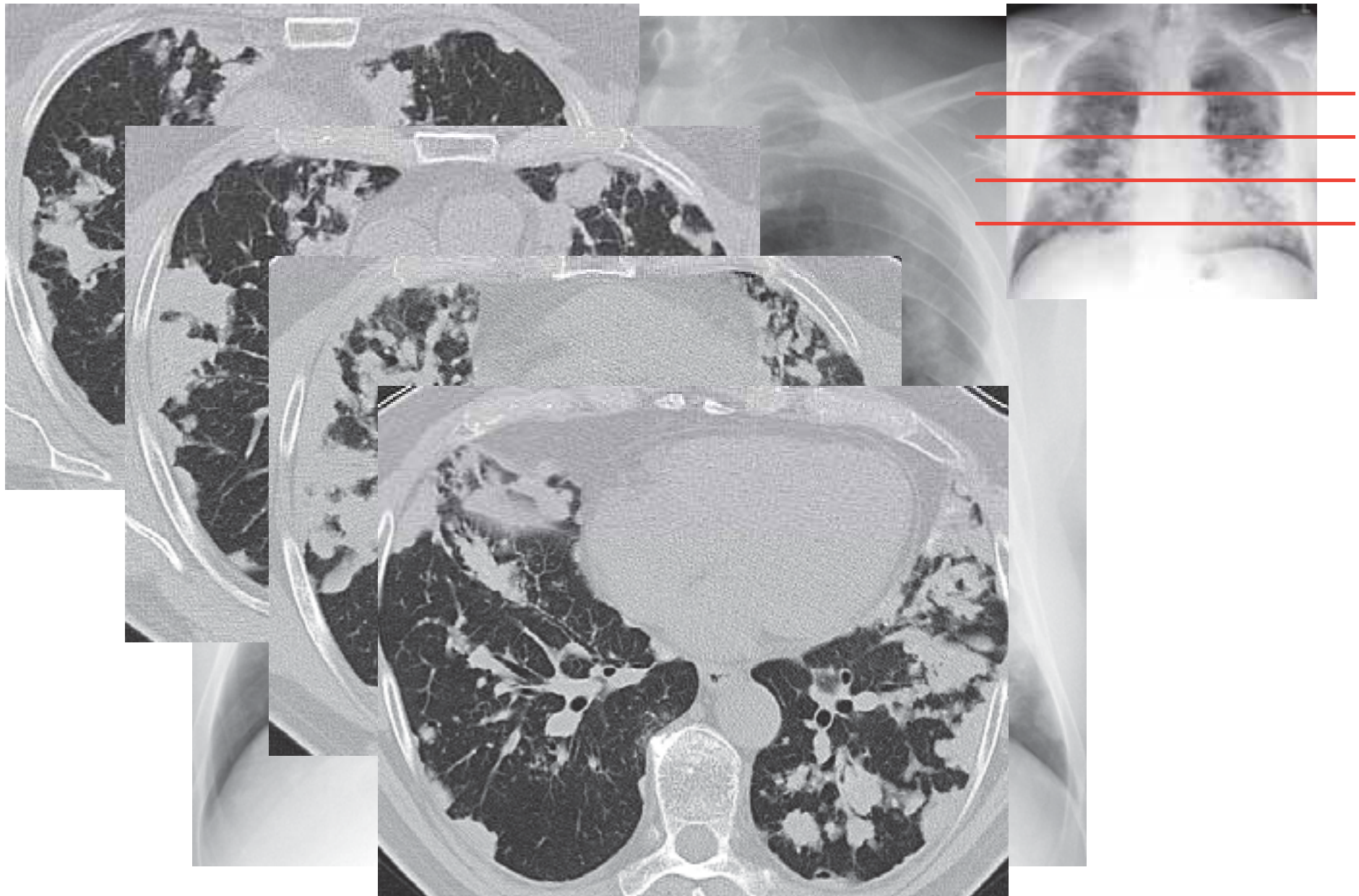


Respiratory System



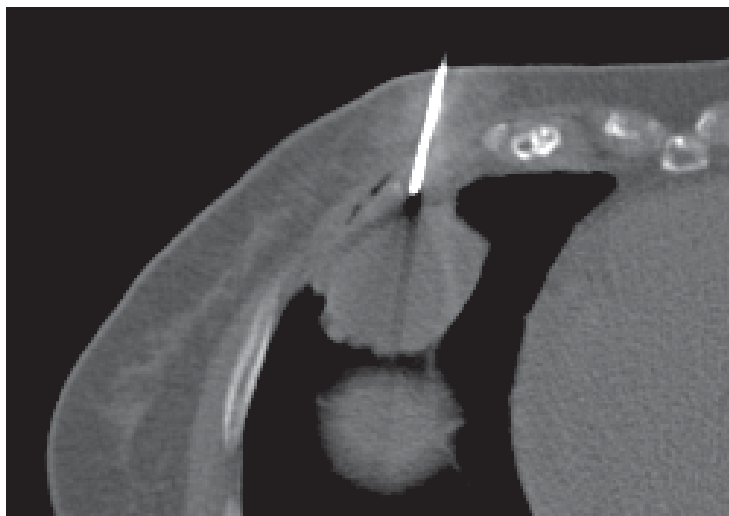
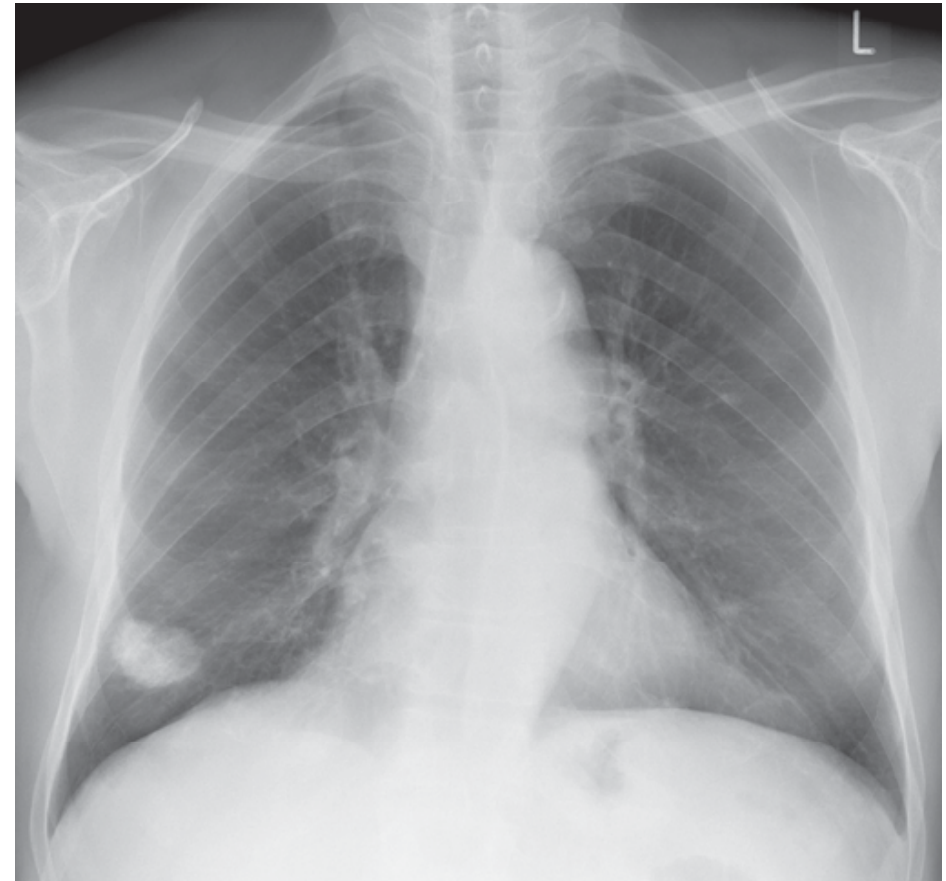
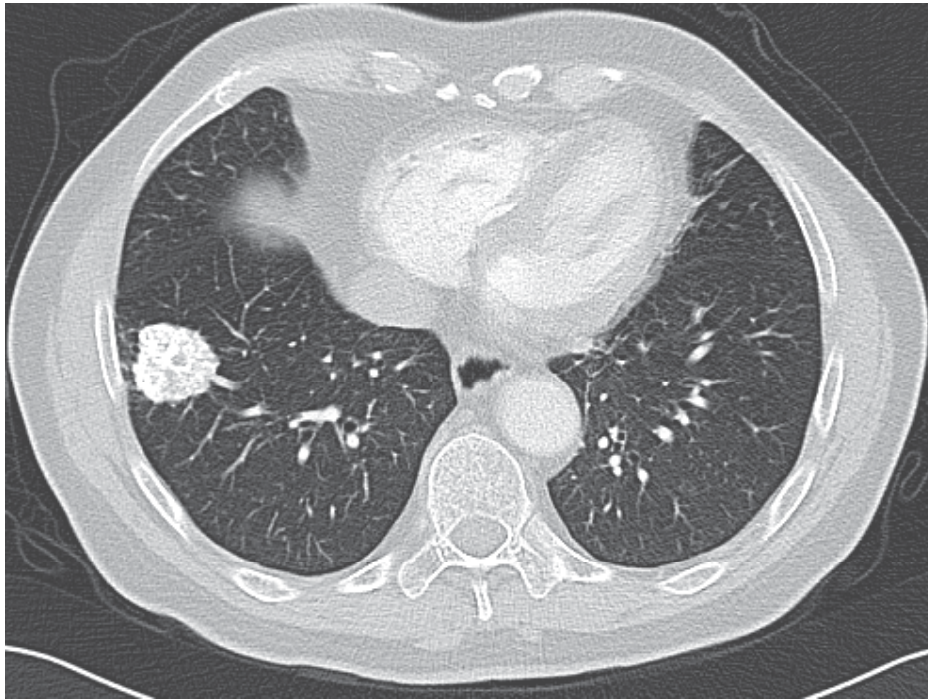


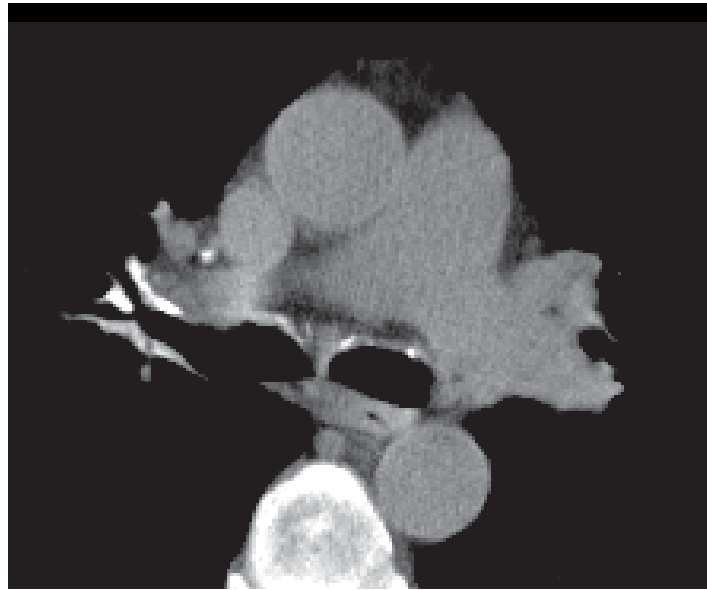
Respiratory System





Respiratory System





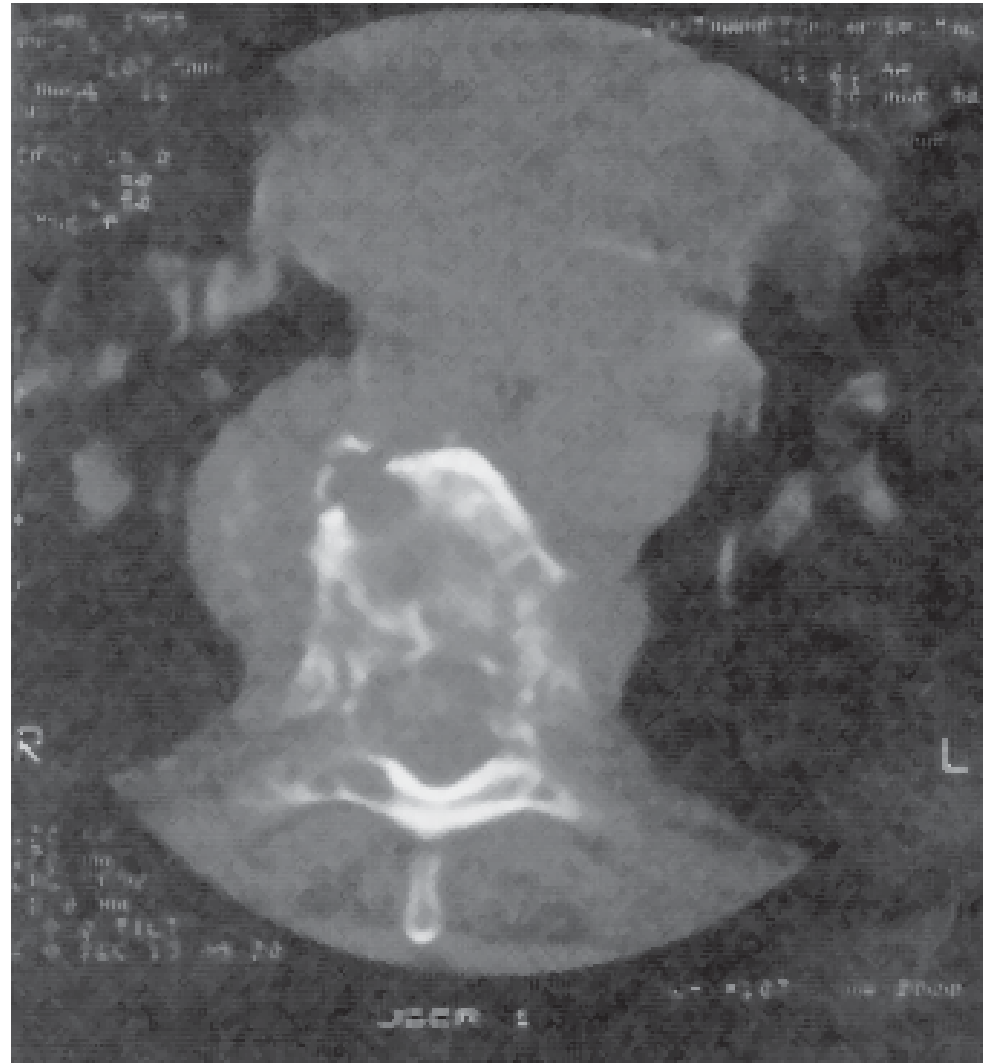


Musculoskeletal System



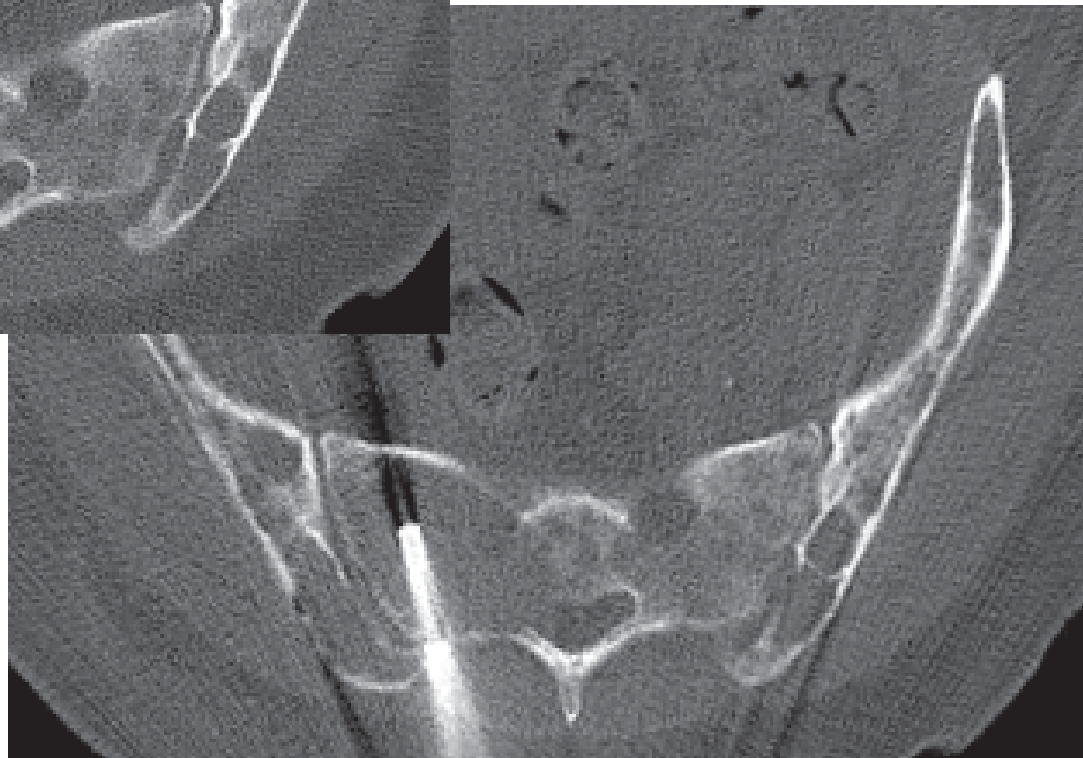
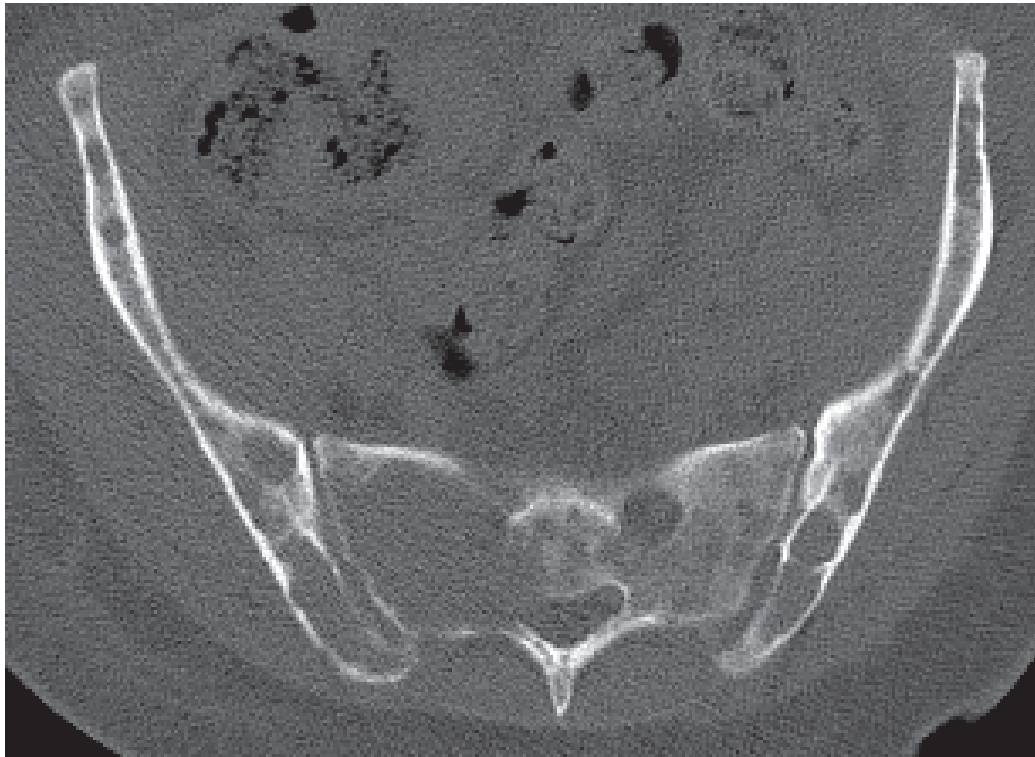


Musculoskeletal System



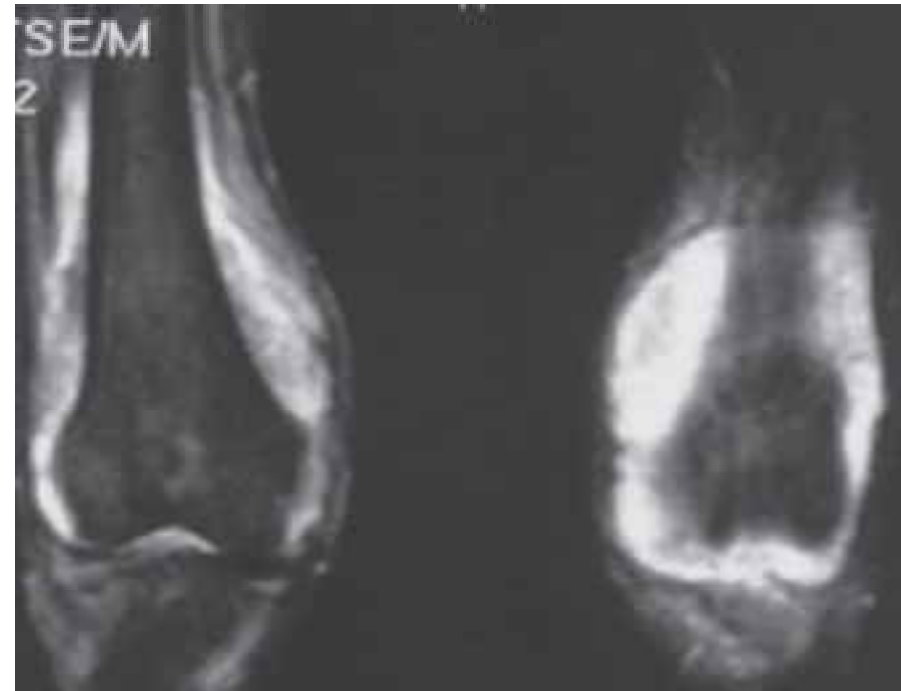
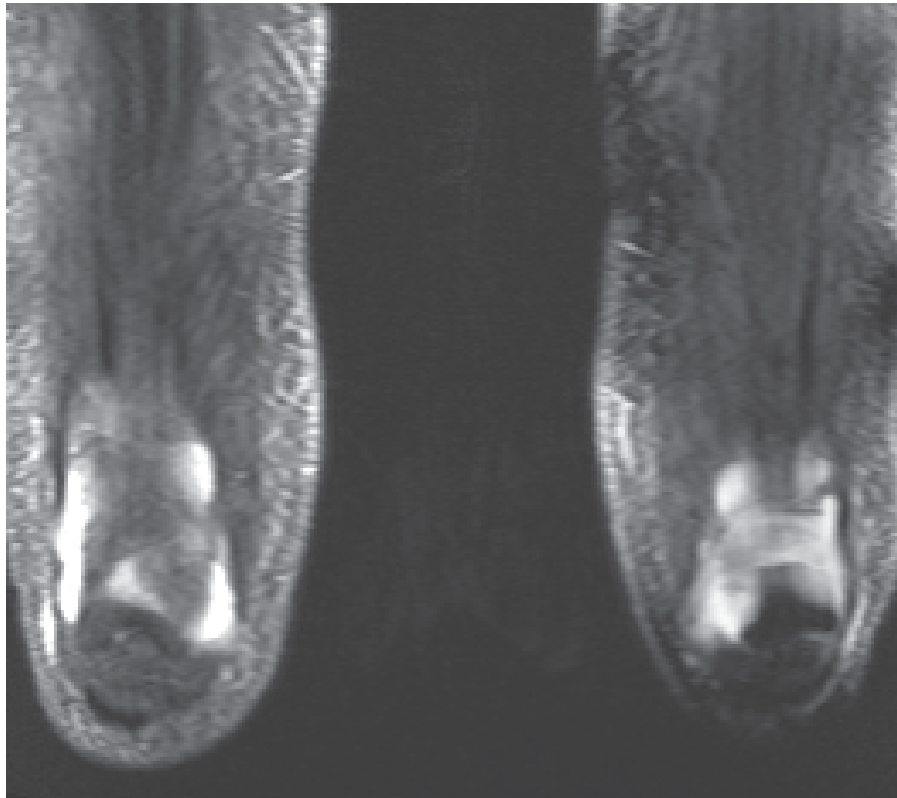


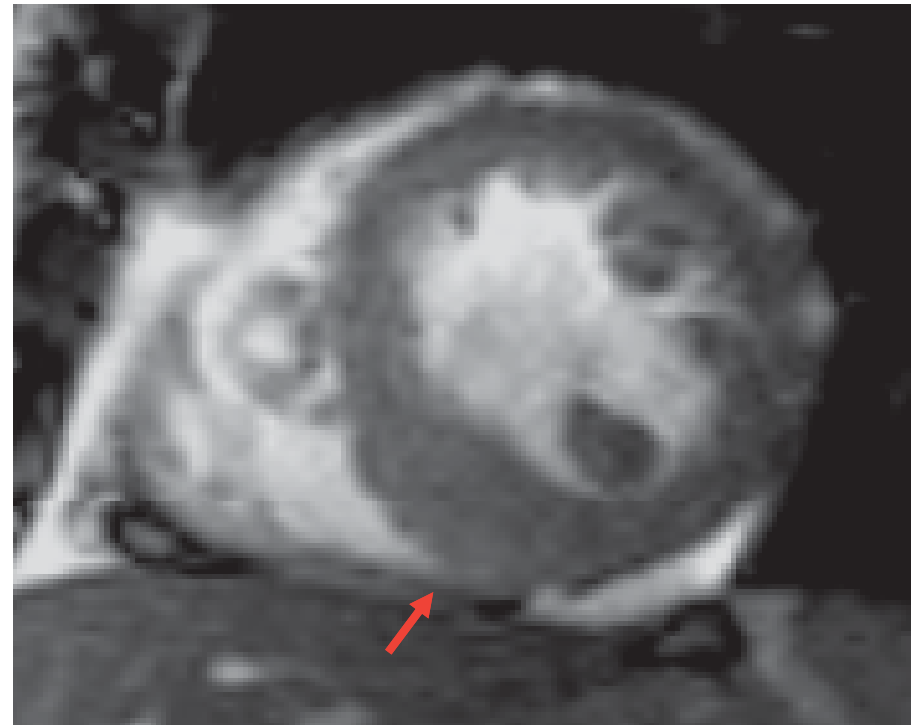
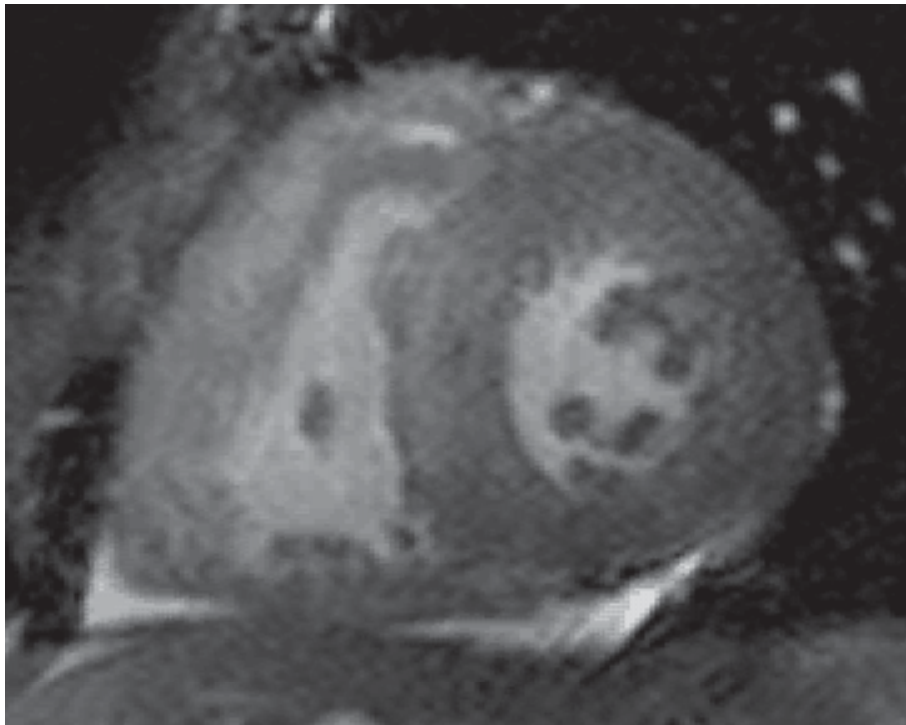
Musculoskeletal System

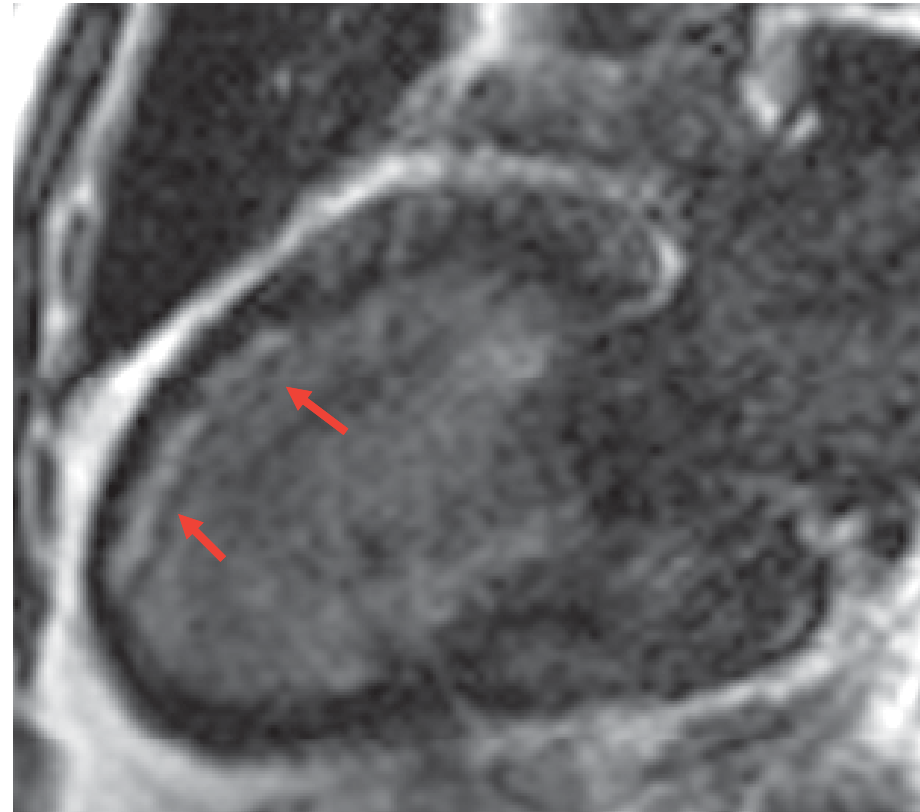


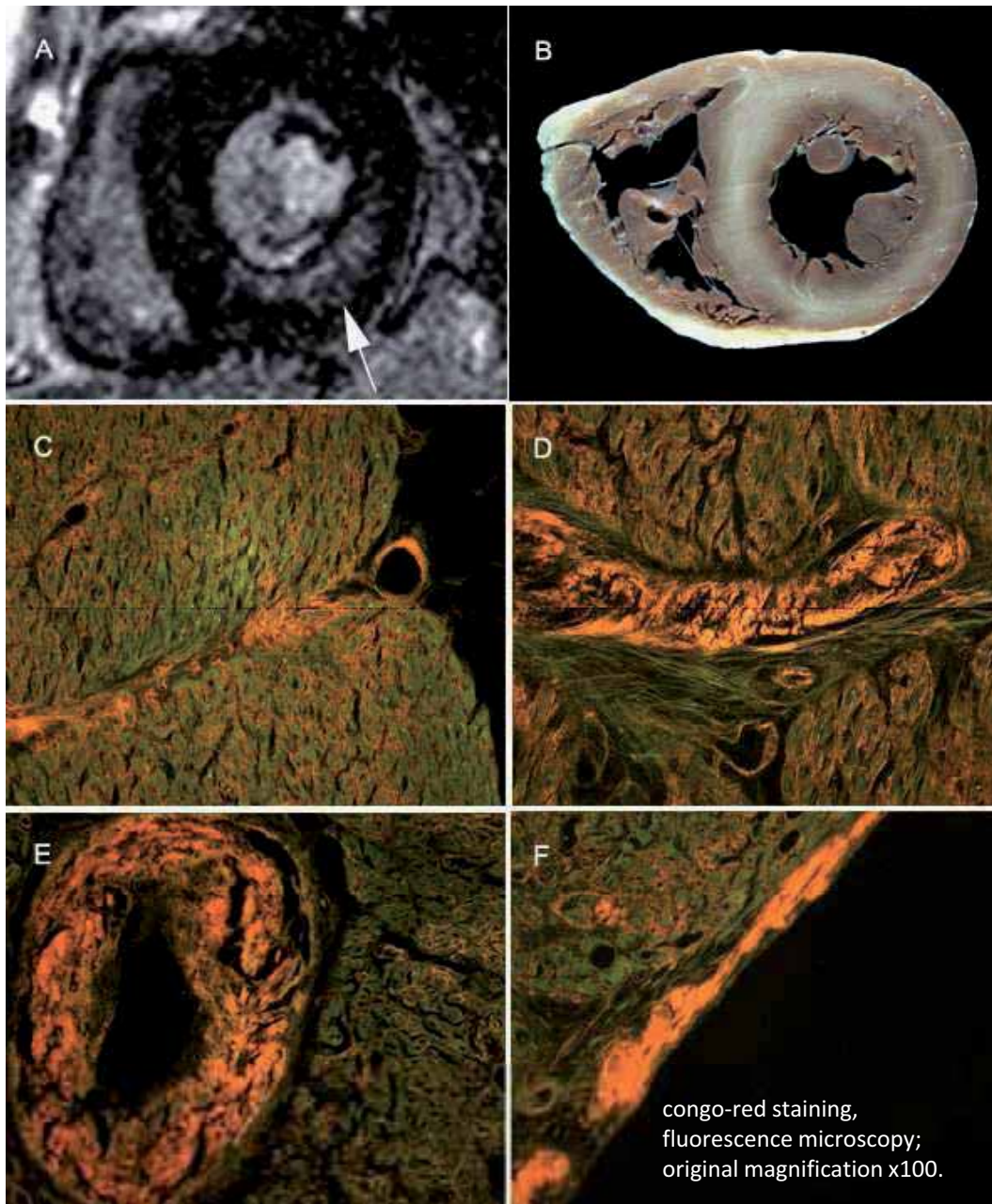


Musculoskeletal System

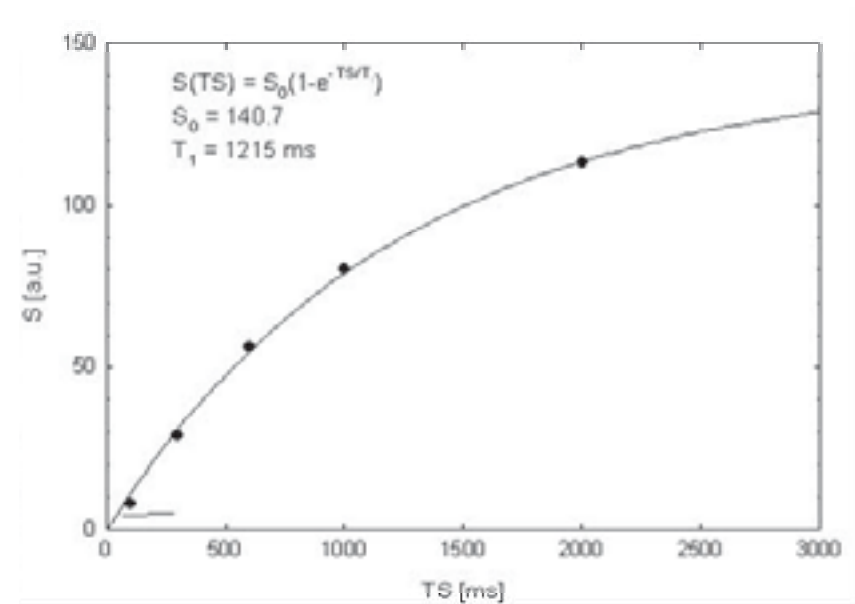
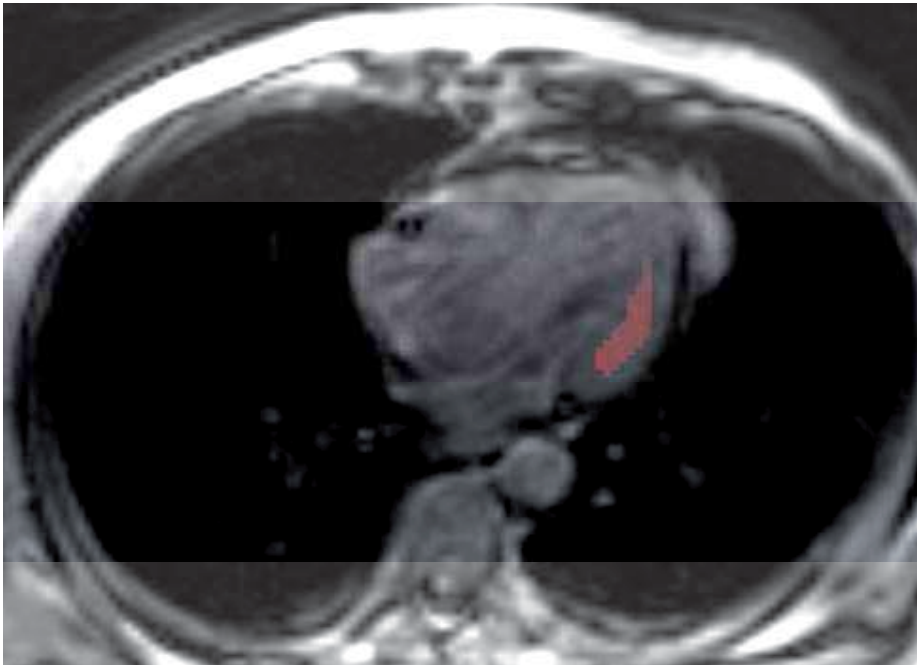


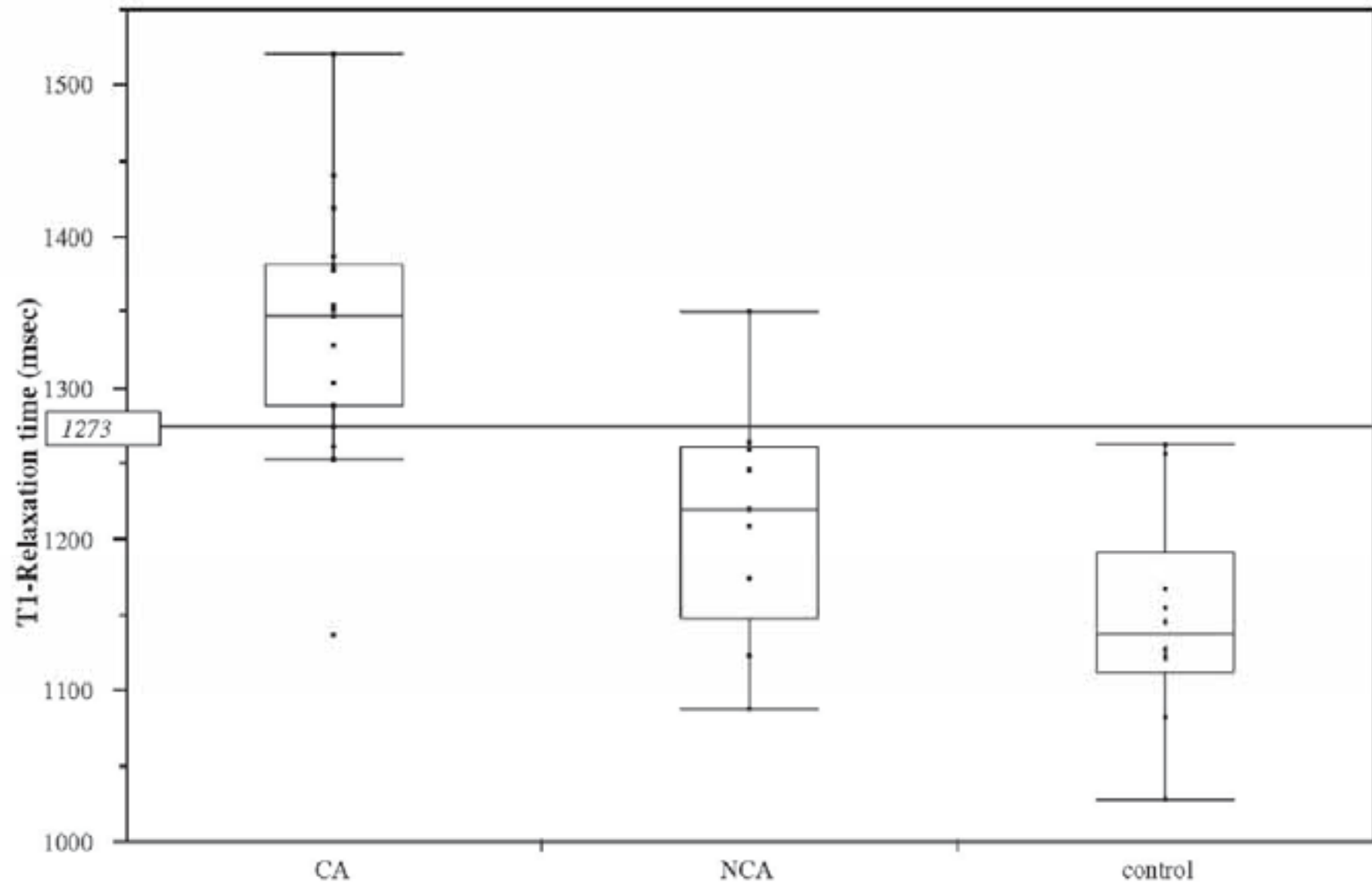






Hosch WP*, Kristen AV*, et al.,
* equivalent contribution, *Amyloids 2008*







**nonspecific
and diverse**

**diffuse and
localized**

**clinical setting
and biopsy**

